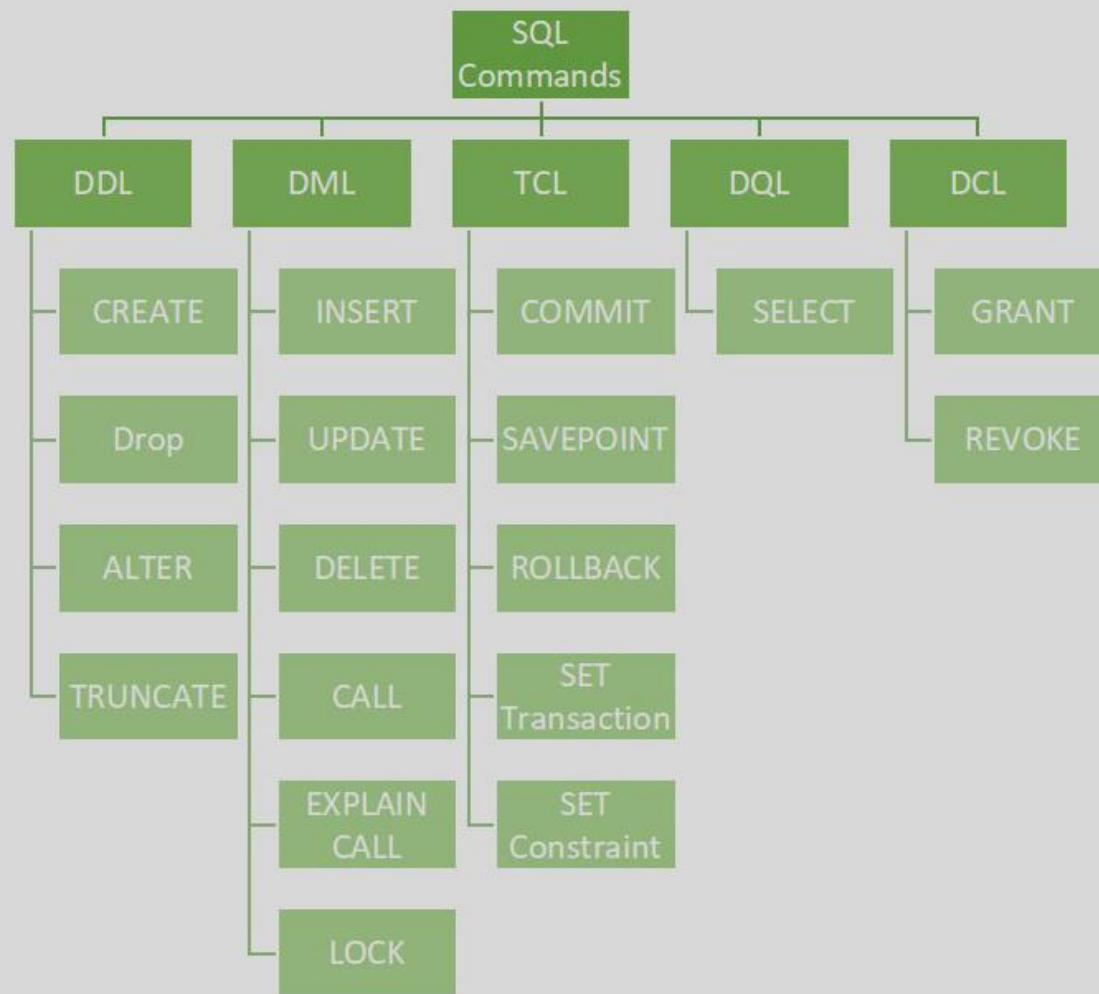


# دستورات SQL



## مفهوم DDL در SQL چیست؟

دستورات SQL بر اساس عملکردی که دارند به دسته بندی های مختلف تقسیم می شوند. یکی از دسته بندی ها DDL یا Data Definition Language است. دستوراتی که در این بخش قرار میگیرند برای تعریف بانک اطلاعاتی استفاده می شوند نه خود داده ها، دستوراتی برای ایجاد بانک اطلاعاتی، جداول، View ها.

## مفهوم DQL در SQL چیست؟

DQL یا Data Query Language دستوراتی هستند که برای کوئری گرفتن و استخراج داده ها استفاده می شوند. دستورات DQL تغییری بر روی داده های داخل جداول ایجاد نمی کنند و فقط برای استخراج و مشاهده داده ها استفاده می شوند.

## مفهوم DML در SQL چیست؟

دستورات DML یا Data Manipulation Language دستوراتی هستند که برای ایجاد تغییرات در داده های موجود در بانک اطلاعاتی از آن ها استفاده می شود. دستوراتی مانند INSERT برای درج داده ها، UPDATE برای به روز رسانی داده ها و DELETE برای حذف داده ها از دستورات دسته DML هستند.

## مفهوم DCL در SQL چیست؟

یکی از مباحث مهم در بانک های اطلاعاتی بحث امنیت داده ها و کنترل دسترسی کاربران به بانک های اطلاعاتی و داده های داخل آن است. در SQL یکسری دستورات وجود دارند که برای ارائه مجوز دسترسی و کنترل سایر دسترسی در بانک اطلاعاتی استفاده می شوند و این دستورات در دسته DCL یا Data Control Language قرار میگیرند. دستوراتی مانند GRANT یا REVOKE نمونه هایی از این دستورات هستند.

## مفهوم TCL در SQL چیست؟

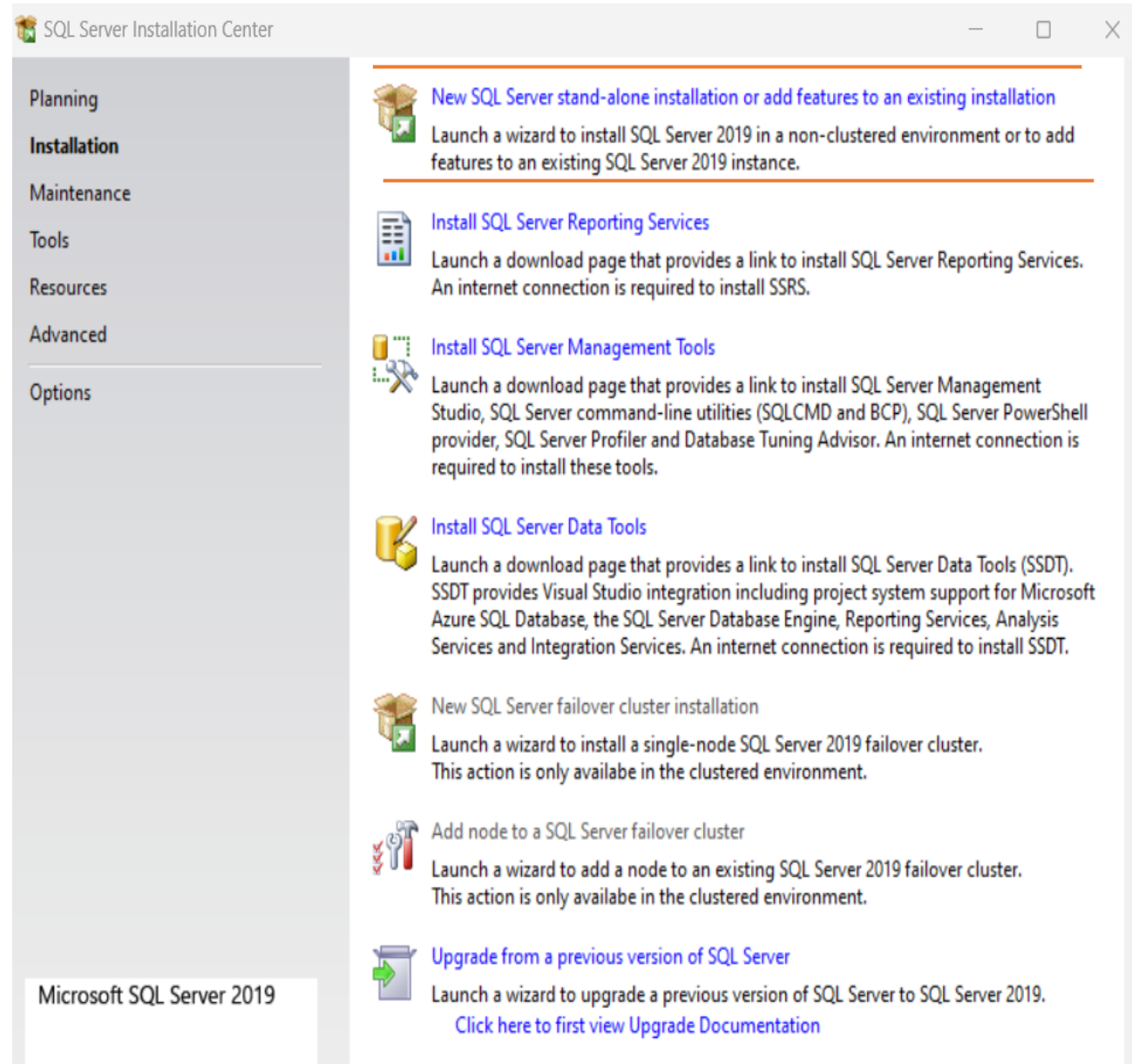
گاهی اوقات نیاز است که یکسری دستورات در SQL به صورت یک واحد یکپارچه اجرا شوند؟ به این معنی که موفقیت آمیز بودن عملیات مورد نظر در گرو اجرای یکسری دستورات است و در صورتی که یکی از دستورات با مشکل مواجه شود، بقیه دستورات باقی مانده نباید اجرا شود و دستورات اجرا شده قبلی نیز باید به حالت قبل برگردند یا بهتر بگوییم تغییرات اعمال شده توسط دستورات قبلی به کنسل شوند. یکسری دستورات مانند COMMIT و ROLLBACK در SQL برای این منظور استفاده می شوند که به آن ها اصطلاحاً TCL یا Transaction Control Language گفته می شود.

مراحل نصب

Microsoft Sql Server 2019



(1)



(2)

## Product Key

Specify the edition of SQL Server 2019 to install.

### Product Key

License Terms

Global Rules

Microsoft Update

Product Updates

Install Setup Files

Install Rules

Feature Selection

Feature Rules

Feature Configuration Rules

Ready to Install

Installation Progress

Complete

Validate this instance of SQL Server 2019 by entering the 25-character key from the Microsoft certificate of authenticity or product packaging. You can also specify a free edition of SQL Server: Developer, Evaluation, or Express. Evaluation has the largest set of SQL Server features, as documented in SQL Server Books Online, and is activated with a 180-day expiration. Developer edition does not have an expiration, has the same set of features found in Evaluation, but is licensed for non-production database application development only. To upgrade from one installed edition to another, run the Edition Upgrade Wizard.

Specify a free edition:

Evaluation

Enter the product key:

PMBDC-FXVM3-T777P-N4FY8-PKFF4

< Back

Next >

Cancel



## License Terms

To install SQL Server 2019, you must accept the Microsoft Software License Terms.

Product Key

**License Terms**

Global Rules

Microsoft Update

Product Updates

Install Setup Files

Install Rules

Feature Selection

Feature Rules

Feature Configuration Rules

Ready to Install



Installation Progress

Complete

### MICROSOFT SOFTWARE LICENSE TERMS

#### MICROSOFT SQL SERVER 2019 STANDARD

These license terms are an agreement between you and Microsoft Corporation (or one of its affiliates). They apply to the software named above, which includes the media on which you received it, if any. The terms also apply to any Microsoft services or software updates (except to the extent such services or updates are accompanied by new or additional terms, in which case those different terms apply prospectively and do not alter your or Microsoft's rights relating to pre-updated software or services). **IF YOU COMPLY WITH THESE LICENSE TERMS, YOU HAVE THE RIGHTS BELOW FOR EACH SERVER YOU**

   
Copy Print

I accept the license terms and [Privacy Statement](#)

Notice: A paid SQL Server edition product key has been provided for the current action - Standard. Please ensure you are entitled to this SQL Server edition with proper licensing in place for the product key (edition) supplied.

SQL Server transmits information about your installation experience, as well as other usage and performance data, to Microsoft to help improve the product. To learn more about data processing and privacy controls, and to turn off the collection of this information after installation, see the [documentation](#).

< Back

Next >

Cancel

## Product Updates

Always install the latest updates to enhance your SQL Server security and performance.

Product Key

License Terms

Global Rules

Microsoft Update

**Product Updates**

Install Setup Files

Install Rules

Feature Selection

Feature Rules

Feature Configuration Rules

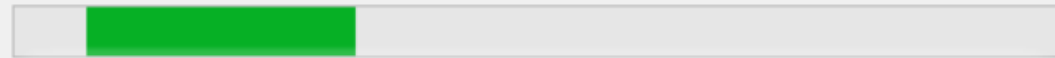
Ready to Install

Installation Progress

Complete

Include SQL Server product updates

Checking for updates...



Skip Scan

[Read our privacy statement online](#)

[Learn more about SQL Server product updates](#)

< Back

Next >

Cancel



## Install Rules

Setup rules identify potential problems that might occur while running Setup. Failures must be corrected before Setup can continue.

### Install Rules

Feature Selection

Feature Rules

Feature Configuration Rules

Ready to Install

Installation Progress

Complete

Operation completed. Passed: 3. Failed 0. Warning 1. Skipped 0.

Hide details <<

Re-run

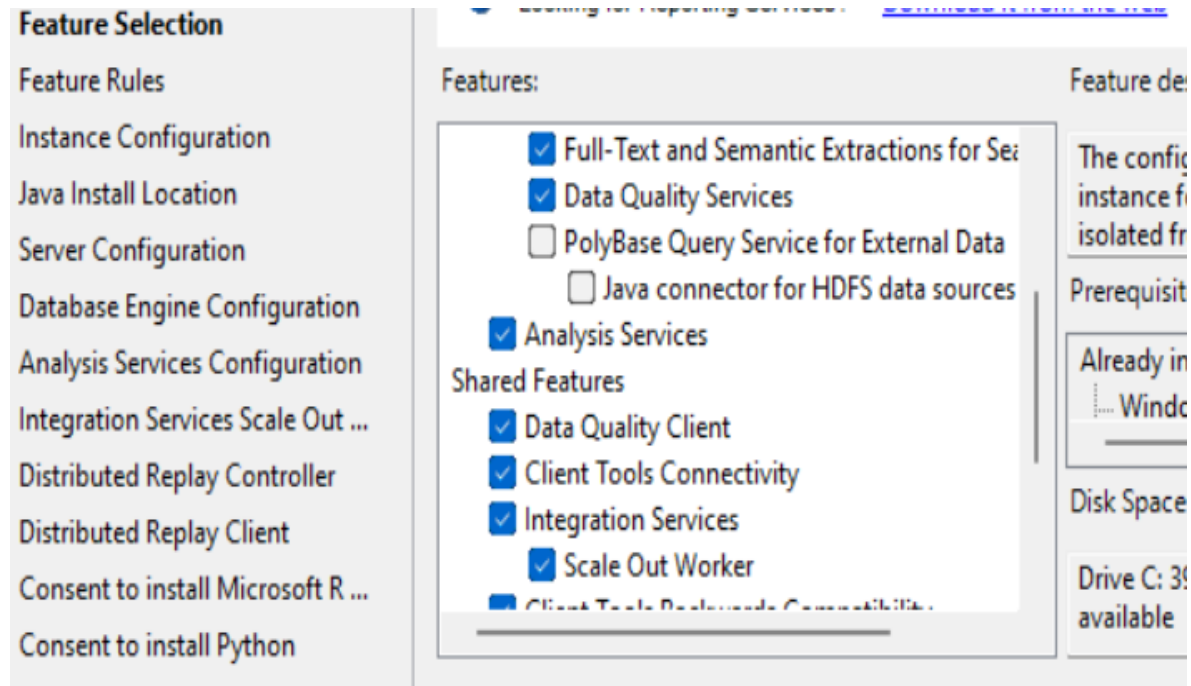
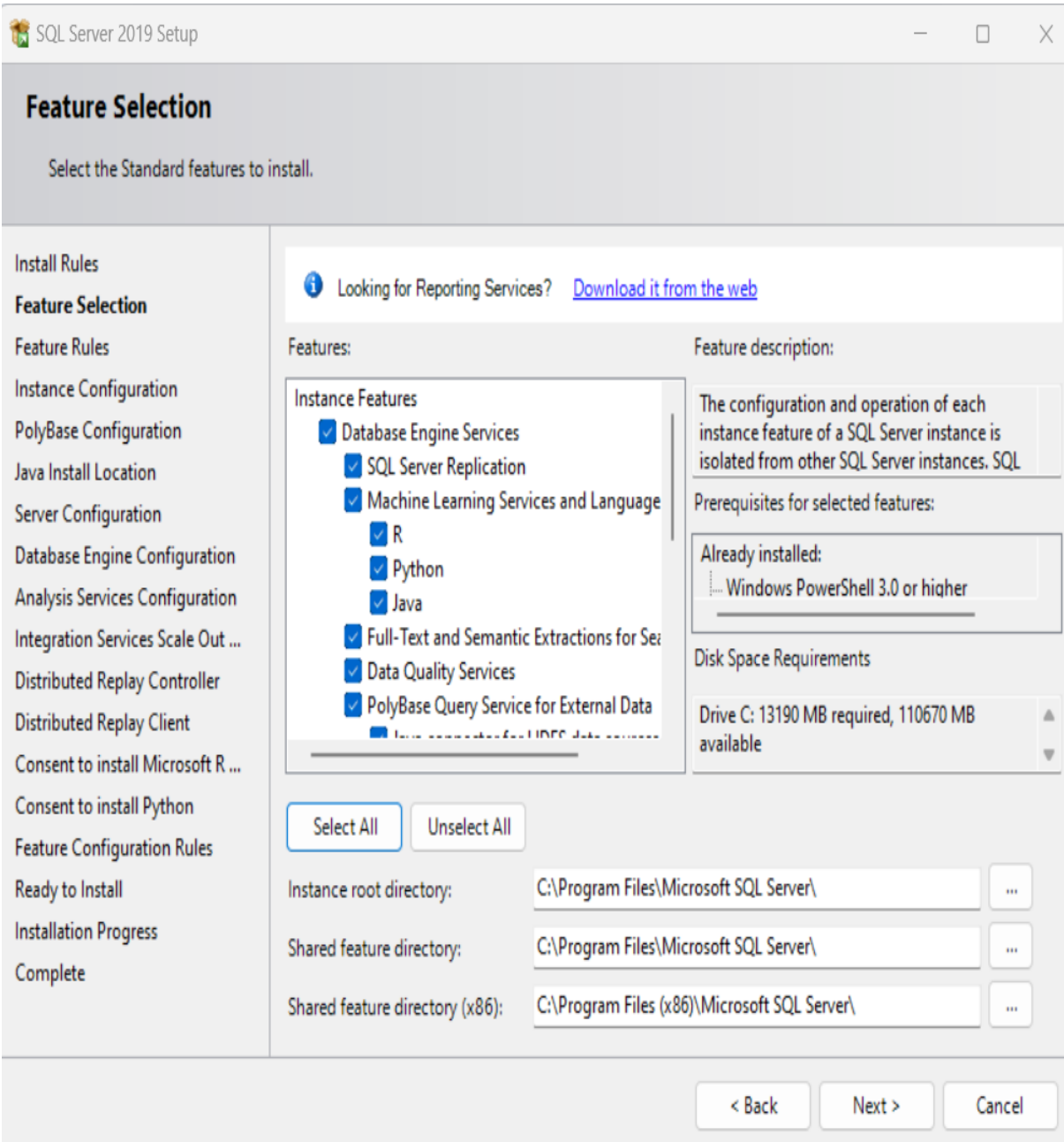
[View detailed report](#)

Result	Rule	Status
✓	Consistency validation for SQL Server registry keys	<a href="#">Passed</a>
✓	Computer domain controller	<a href="#">Passed</a>
⚠	Windows Firewall	<a href="#">Warning</a>
✓	SQL 2019 minimum CTP for Upgrade and Side by Side Support	<a href="#">Passed</a>

< Back

Next >

Cancel



## Instance Configuration

Specify the name and instance ID for the instance of SQL Server. Instance ID becomes part of the installation path.

Install Rules

Feature Selection

Feature Rules

**Instance Configuration**

PolyBase Configuration

Java Install Location

Server Configuration

Database Engine Configuration

Analysis Services Configuration

Integration Services Scale Out ...

Distributed Replay Controller

Distributed Replay Client

Consent to install Microsoft R ...

Consent to install Python

Feature Configuration Rules

Ready to Install

Installation Progress

Complete

Default instance

Named instance:

MSSQLSERVER

Instance ID:

MSSQLSERVER

SQL Server directory:

C:\Program Files\Microsoft SQL Server\MSSQL15.MSSQLSERVER

Analysis Services directory:

C:\Program Files\Microsoft SQL Server\MSAS15.MSSQLSERVER

Installed instances:

Instance Name	Instance ID	Features	Edition	Version

< Back

Next >

Cancel

## Database Engine Configuration

Specify Database Engine authentication security mode, administrators, data directories, TempDB, Max degree of parallelism, Memory limits, and Filestream settings.

- Install Rules
- Feature Selection
- Feature Rules
- Instance Configuration
- Java Install Location
- Server Configuration
- Database Engine Configuration**
- Analysis Services Configuration
- Integration Services Scale Out ...
- Distributed Replay Controller
- Distributed Replay Client
- Consent to install Microsoft R ...
- Consent to install Python
- Feature Configuration Rules
- Ready to Install
- Installation Progress
- Complete

Server Configuration | Data Directories | TempDB | MaxDOP | Memory | FILESTREAM

Specify the authentication mode and administrators for the Database Engine.

Authentication Mode

- Windows authentication mode
- Mixed Mode (SQL Server authentication and Windows authentication)

Specify the password for the SQL Server system administrator (sa) account.

Enter password:

••••••••

Confirm password:

••••••••

Specify SQL Server administrators

--

SQL Server administrators have unrestricted access to the Database Engine.

Add Current User

Add...

Remove

< Back

Next >

Cancel

## Analysis Services Configuration

Specify Analysis Services server modes, administrators, and data directories.

Install Rules

Feature Selection

Feature Rules

Instance Configuration

Java Install Location

Server Configuration

Database Engine Configuration

**Analysis Services Configuration**

Integration Services Scale Out ...

Distributed Replay Controller

Distributed Replay Client

Consent to install Microsoft R ...

Consent to install Python

Feature Configuration Rules

Ready to Install

Installation Progress

Complete

Server Configuration

Data Directories

Server Mode:

- Multidimensional and Data Mining Mode
- Tabular Mode
- PowerPivot Mode

Specify which users have administrative permissions for Analysis Services.

User
------

Analysis Services administrators have unrestricted access to Analysis Services.

Add Current User

Add...

Remove

< Back

Next >

Cancel

## Consent to install Microsoft R Open

Download and install necessary pre-requisite.

Install Rules

Feature Selection

Feature Rules

Instance Configuration

Java Install Location

Server Configuration

Database Engine Configuration

Analysis Services Configuration

Integration Services Scale Out ...

Distributed Replay Controller

Distributed Replay Client

**Consent to install Microsoft R ...**

Consent to install Python

Feature Configuration Rules

Ready to Install

Installation Progress

Complete

Microsoft R Open is an enhanced distribution of R made available by Microsoft under the GNU General Public License v2.

R is © the R Foundation for Statistical Computing. For more information on R-related products and services, visit <http://r-project.org>.

By clicking "Accept" you agree to download Microsoft R Open and install it on your machine, and agreeing to accept patches for this software according to your SQL Server update preferences.

Please Wait ...

Accept

< Back

Next >

Cancel

## Ready to Install

Verify the SQL Server 2019 features to be installed.

Product Key

License Terms

Global Rules

Microsoft Update

Product Updates

Install Setup Files

Install Rules

Feature Selection

Feature Rules

Instance Configuration

Server Configuration

Database Engine Configuration

Feature Configuration Rules

**Ready to Install**

Installation Progress

Complete

Ready to install SQL Server 2019:



Configuration file path:

C:\Program Files\Microsoft SQL Server\150\Setup Bootstrap\Log\20220103\_115432\ConfigurationFile.ini

< Back

Install

Cancel



## Complete

Your SQL Server 2019 installation completed successfully with product updates.

Product Key

License Terms

Global Rules

Microsoft Update

Product Updates

Install Setup Files

Install Rules

Feature Selection

Feature Rules

Instance Configuration

Server Configuration

Database Engine Configuration

Feature Configuration Rules

Ready to Install

Installation Progress

**Complete**

Information about the Setup operation or possible next steps:

Feature	Status
✓ Database Engine Services	Succeeded
✓ SQL Browser	Succeeded
✓ SQL Writer	Succeeded
✓ Client Tools Connectivity	Succeeded
✓ SQL Client Connectivity SDK	Succeeded
✓ SQL Client Connectivity	Succeeded

Details:

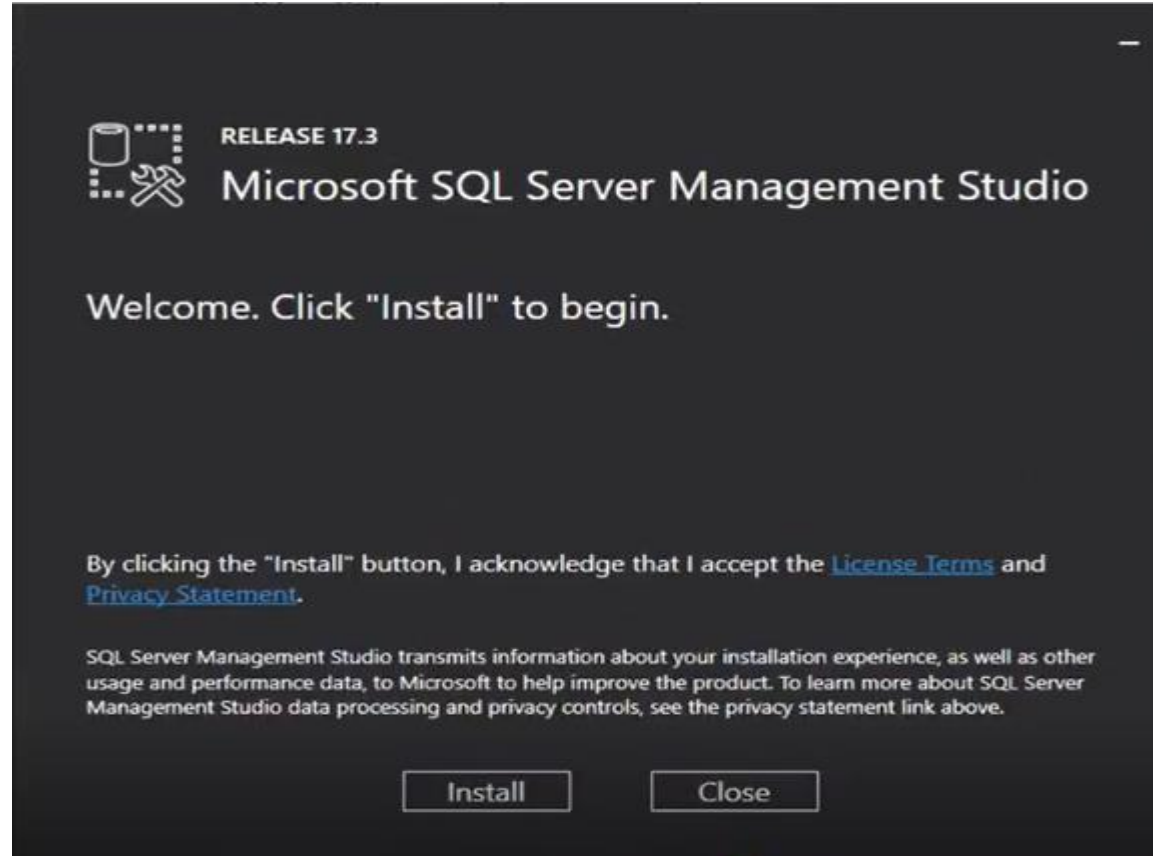
Install successful.

Summary log file has been saved to the following location:

[C:\Program Files\Microsoft SQL Server\150\Setup Bootstrap\Log\20220103\\_115432\Summary\\_DESKTOP-30G1L8M\\_20220103\\_115432.txt](C:\Program Files\Microsoft SQL Server\150\Setup Bootstrap\Log\20220103_115432\Summary_DESKTOP-30G1L8M_20220103_115432.txt)

# پارت دوم نصب

## Microsoft Sql Server Management Studio





RELEASE 18.12.1

# Microsoft SQL Server Management Studio with Azure Data Studio

Package Progress



SQL Server Management Studio for Analysis Services

Overall Progress



Cancel